

Date: July 2023

CASES AND RATES

2015-2019

	INCIDENCE			MORTALITY		
	ASR	Annual Average	%	ASR	Annual Average	%
Females	75.33	2005	28.79	21.54	715	19.11

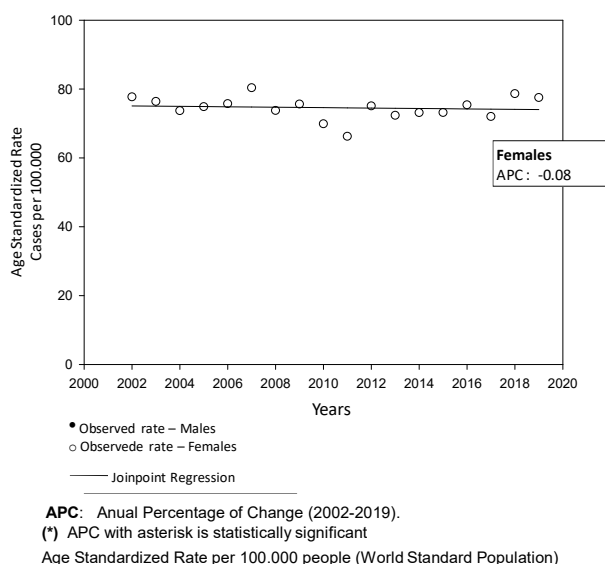
ASR.: Age Standardized Rate per 100.000 people (World Standard Population)

% on total cancer cases excluding non melanoma of the skin

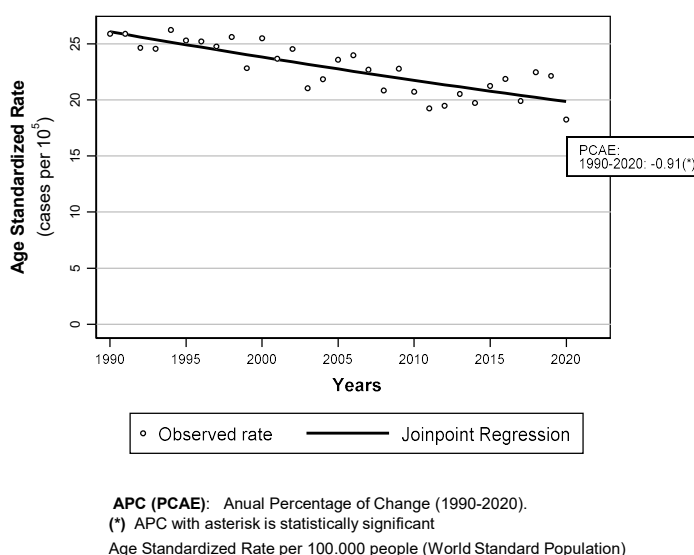
Invasive Breast Cancer is the most frequent malignancy in Uruguay (excluding non melanoma of the skin). About 2000 new cases of invasive BC are diagnosed every year. It is also the main cancer death cause among women. An average of 715 women die from BC every year. Globally Uruguayan BC incidence rates are situated in the second highest quintile, but mortality rates rank in the highest.

INCIDENCE AND MORTALITY TRENDS

RECENT TRENDS IN INCIDENCE URUGUAY
BREAST CANCER 2002-2019



RECENT TRENDS IN MORTALITY URUGUAY
BREAST CANCER 1990-2020

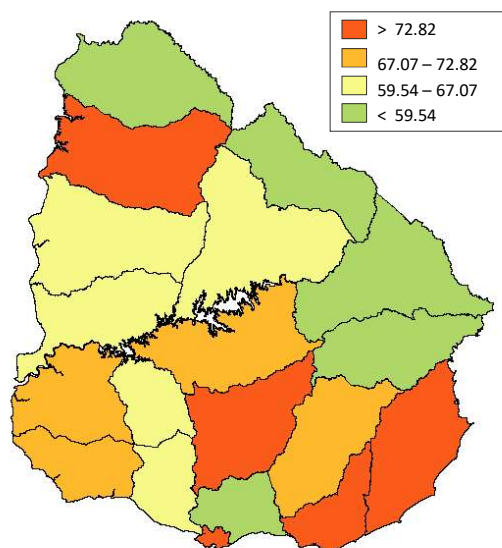


BC standardized incidence rates remained stable along the 2002-2019 period. Standardized Mortality Rates decreased 0.91% per year. Cumulative decrease in age standardized mortality rates along the whole 1990-2020 period was roughly 20%.

GEOGRAPHICAL DISTRIBUTION INCIDENCE*

BREAST CANCER – PERIOD 2015-2019

FEMALES

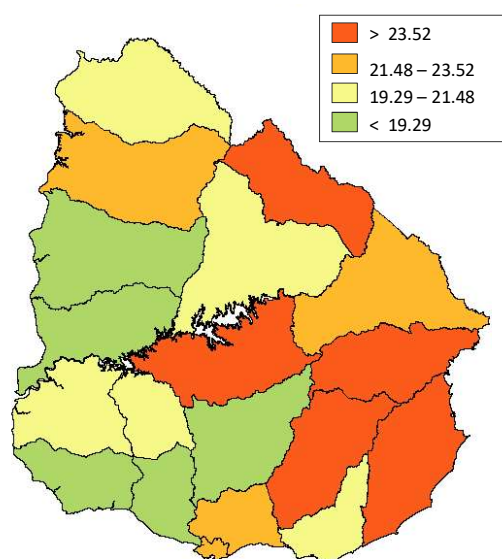


*Age Standardized Rate per 100.000 people (World Standard Population)

GEOGRAPHICAL DISTRIBUTION MORTALITY*

BREAST CANCER – PERIOD 2015-2019

FEMALES



*Age Standardized Rate per 100.000 people (World Standard Population)

DISTRIBUTION BY AGE GROUPS

2015-2019

INCIDENCE

NUMBER OF NEW INCIDENCE CASES IN URUGUAY.

FEMALES

	0-4	5-9	10-14	15-19	20-24	25-29	30-34	35-39	40-44	45-49	50-54	55-59	60-64	65-69	70-74	75-79	80-84	85 +	N/A	Annual Average	TOTAL Period
C50 Breast	0	0	0	1	8	53	134	358	727	955	1045	1015	1190	1144	1023	925	753	693	3	2005	10027

AGE-SPECIFIC RATES PER 100.000 (World)

	0-4	5-9	10-14	15-19	20-24	25-29	30-34	35-39	40-44	45-49	50-54	55-59	60-64	65-69	70-74	75-79	80-84	85 +	Crude Rate*	ASR (World)*
C50 Breast	0.00	0.00	0.00	0.15	1.32	9.64	21.03	58.35	143.90	178.99	190.55	199.47	279.24	297.99	334.06	307.19	287.25	300.25	115.47	75.33

MORTALITY

NUMBER OF CASES IN URUGUAY

	0-4	5-9	10-14	15-19	20-24	25-29	30-34	35-39	40-44	45-49	50-54	55-59	60-64	65-69	70-74	75-79	80-84	85 +	N/A	Annual Average	TOTAL Period
C50 Breast	0	0	0	0	1	12	31	63	121	174	251	292	362	359	402	422	406	674	3	715	3573

AGE-SPECIFIC MORTALITY RATES PER 100.000 (World)

	0-4	5-9	10-14	15-19	20-24	25-29	30-34	35-39	40-44	45-49	50-54	55-59	60-64	65-69	70-74	75-79	80-84	85 +	Crude Rate*	ASR (World)*
C50 Breast	0.00	0.00	0.00	0.00	0.16	2.18	4.86	10.27	23.95	32.61	45.77	57.38	84.95	93.51	131.27	140.14	154.88	292.01	41.15	21.54

*Age Standardized Rate per 100.000 people (World Standard Population)

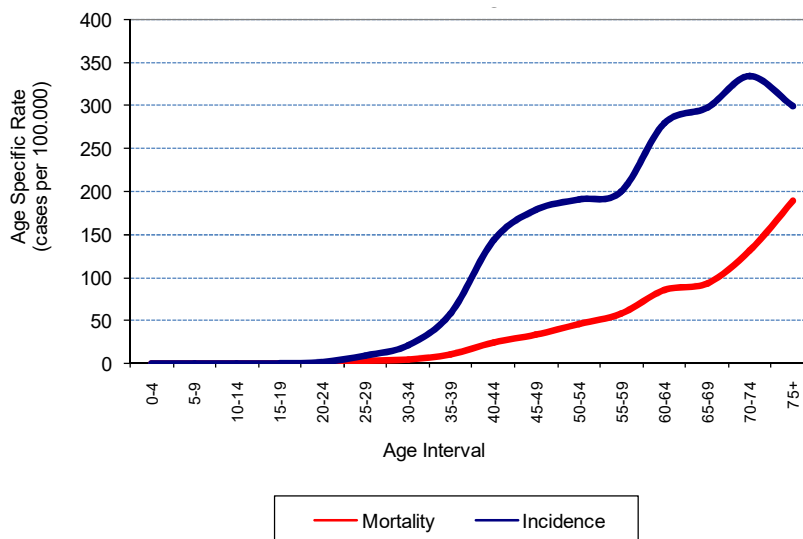
AGE-SPECIFIC RATES (per 100,000)

2015-2019

CANCER IN URUGUAY. 2015-2019

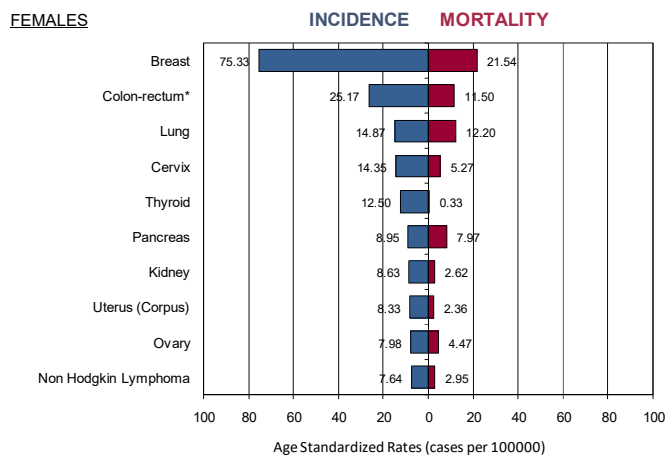
BREAST CANCER - FEMALES

Age-specific rates



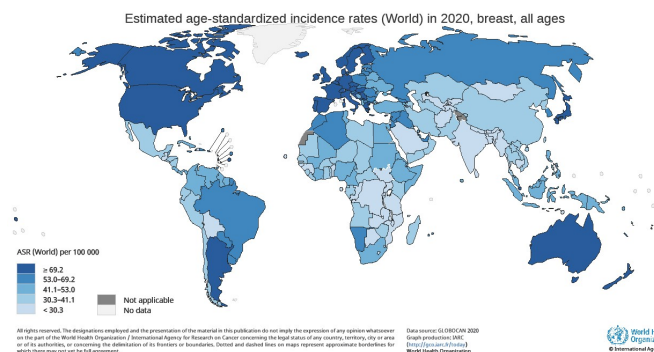
CANCER IN URUGUAY 2015-2019

INCIDENCE LEADING SITES WITH ITS MORTALITY

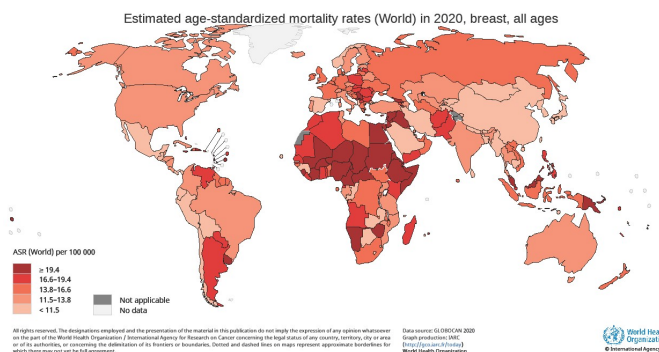


* Colon-rectum involves codes C18-C20 of the ICD-O 3rd Ed. IARC-OMS (colon, rectosigmoid junction and rectum)

CANCER INCIDENCE BREAST - FEMALES



CANCER MORTALITY BREAST - FEMALES



GLOBOCAN 2020. Graph production: IARC (<http://gco.iarc.fr/today>)
World Health Organization

ASR: Age-standardised rate. The World Standardised incidence Rate per 100,000.

Caution that must be taken into account about these estimates are discussed in Section: "About y Data & Methods" (<https://gco.iarc.fr/today>)

Website citation:

CHLCC. Fact Sheet- BREAST. Incidence and Mortality period 2015-2019. Mortality trends 2020
<https://www.comisioncancer.org.uy/mensaje/3037> accessed [DD Month YYYY]